



## SAT in line amplifier

1T series

**art. 15-030**  
**1T37 SAT**

Indoor in line amplifier, indicated for large size systems, that allows to reamplify SAT signals along a distribution line.  
Equipped with no amplified input for mixing TV signals.

Realized into shielded housing with female IEC 9,5 connectors on inputs and male screw F type connector on output.

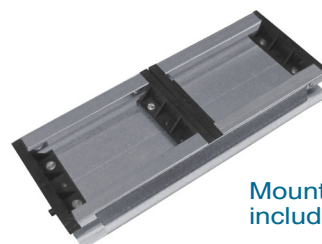
It is equipped with a coaxial attenuator (0÷20 dB) as level regulator for SAT signals.

It allows to enable remote power supply for LNB.

A 15 Vdc power supply unit and a mounting are included.

### Characteristics

- Amplified SAT signals with not amplified mixed TV signals
- Power supply and mounting included.
- Shielded housing.
- Female IEC 9,5 connectors on inputs and screw F-type connector on output.



Mounting included



Code	15-030	
Item	1T37 SAT	
No. of SAT amplified inputs	1	
No. of TV passive inputs	1	
No. of outputs	1	
No. of coaxial attenuators (0÷20 dB)	1 (SAT)	
Frequencies range	MHz	40 ÷ 862 (TV) 950 ÷ 2150 (SAT)
SAT max output level*	dBµV	125
SAT band gain	dB ±3	25 ÷ 35
TV band insertion loss	dB ±1,5	4
Absorbed current	mA	165
Power supply	15 Vdc 1,3 A	
AC main tension	230 V~ ±10% 50Hz	
Isolation class	II	
Amplifier dimensions (LxWxH)	mm	50x85x165
Power supply dimensions (LxWxH)	mm	92x140x165
Mounting dimensions (LxWxH)	mm	330x50x135
Packaging dimensions (LxWxH)	mm	490x235x200
Packaging weight	Kg	2,73
Fit temperature	°C	-10 ÷ +55

\* Maximum output level measured with the method IM3 -35dBc 2 tones.  
Technical data refer to a temperature of 25 °C

### Example of application

