



## Balcony brackets

### art. 07-609 ZANCA CURVA PER RINGHIERA

Ideal for dishes fixing on balcony, by dedicated clamps.

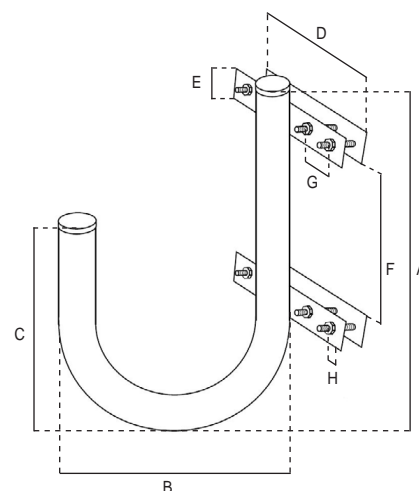
The tubes are made of steel, hot dip galvanized to ensure high quality and durability. The protection of the zinc cladding is of 50/85 microns thick.

The measures are in mm, unless otherwise specified.

Dimensional and thickness tolerances are allowed by the regulations that establish the quality of the raw materials used.



Code	07-609	
Item	ZANCA CURVA PER RINGHIERA	
<b>BENT</b>		
Type of bent	fixed	
Bending radius	180°	
Thickness	mm	1,4
Ø	mm	40
Dimensions	mm	400 (A); 240 (B); 280 (C)
<b>FIXING PLATES</b>		
No. fixing plates	2	
Width	mm	200 (D)
Height	mm	40 (E)
Thickness	mm	4
Screws	TE 8x60 mm	
Ø screws holes	mm	10
Distance between screws holes	mm	20 (G); 60(H)
Distance between plates	mm	260 (F)



### Single packaging

Packaging	Dimensions LxWxH (mm)	Weight (Kg)
Bracket	400x250x200	2,1

