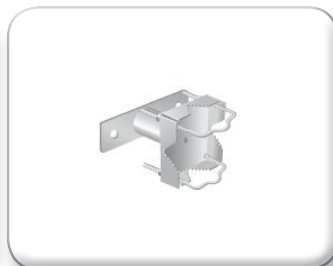




Zanca tubolare telescopica
Palo Ø 40÷70 mm (07-623/A)
Palo Ø 40÷90 mm (altri art.)
Piastra 200x70x4 mm
Art. 07-623/A L 7÷12 cm
Art. 07-623 L 15÷22 cm
Art. 07-624 L 25÷42 cm



Zanca attacco ganancia 5 cm
Art. 07-480
Palo Ø 30÷70 mm
Piastra 170x40x4 mm



Zanca attacco ganancia 10 cm
Art. 07-481
Palo Ø 30÷70 mm
Piastra 170x40x4 mm



Zanca attacco ganancia 15 cm
Art. 07-483
Palo Ø 30÷70 mm
Piastra 200x70x4 mm



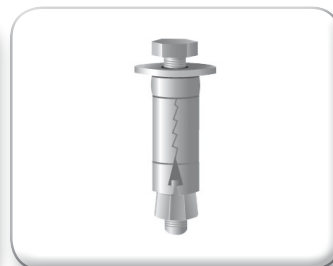
Zanca telescopica 20/40
Art. 07-484
L 20÷34 cm
Palo Ø 30÷70 mm
Piastra 170x40x4 mm



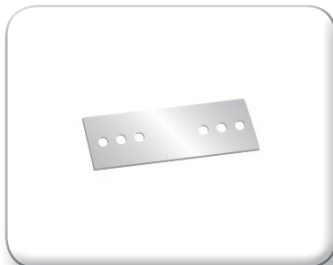
Zanca telescopica 20/40 rinforzata
Art. 07-485
L 20÷34 cm
Palo Ø 30÷70 mm
Piastra 200x100x4 mm



Tassello ad espansione Ø 12 mm
Art. 07-613/A
Per zanca Emilia



Tassello ad espansione Ø 18 mm
Art. 07-613
Per zanca Emilia



Contropiastra universale
Art. 07-588
Per zanche Emilia
250x70x5 mm



Barra filettata m 1
Art. 07-588/A
L 1 m
Con dadi



Zanca muro treppiedi
Art. 07-629
L 45 cm, treppiedi Emilia
Palo Ø 40÷90 mm



Zanca lineare
30x3 mm
Palo Ø 25÷45 mm
Art. 07-555 L 23 cm
Art. 07-556 L 33 cm



Zanca rinforzata
Palo Ø 30÷60 mm
Art. 07-576/E L 30 cm
Art. 07-577 L 40 cm
Art. 07-578 L 50 cm



Zanca U
Palo Ø 30÷80 mm
Art. 07-585 H 10 cm
Art. 07-586 H 20 cm
Art. 07-587 H 30 cm



Zanca U regolabile
Art. 07-589
H 42÷66 cm
Palo Ø 30÷60 mm



Zanca universale 25 cm
Art. 07-568
Palo Ø 25÷60 mm
con distanziatore